

# OUTDOOR FURNITURE FINISHES

## BUSINESS FABRICS

**(agora)**

Cleaning Instructions



### TECHNICAL SHEET OF THE FABRIC

Composition: 100% solution dyed acrylic

Colorfastness: 7/8

Weight: 280 gr / m2



**ANS** ANTHRACITE / ANTRACITE



**FOS** FOSSIL



**ECS** ECRU



**BRS** BRISA



**GRS** GREY / GRIGIO



**TPS** TAUPE / TALPA

# OUTDOOR FURNITURE FINISHES

## AVANT-GARDE FABRIC

### TECHNICAL SHEET OF THE FABRIC

Composition: od\_polyprop 100%

Colorfastness: 8/8

Weight: 526 gr / m<sup>2</sup>

Martindale: 20.000

Cleaning Instructions / I:



**WSS** WHITE STAR



**CSS** CREAM STAR



**FSS** GREY MUD STAR



# OUTDOOR FURNITURE FINISHES

## SUNSET FABRIC

### TECHNICAL SHEET OF THE FABRIC

Composition: 100% solution dyed acrylic

Colorfastness: 8/8

Weight: 450 gr / m<sup>2</sup>



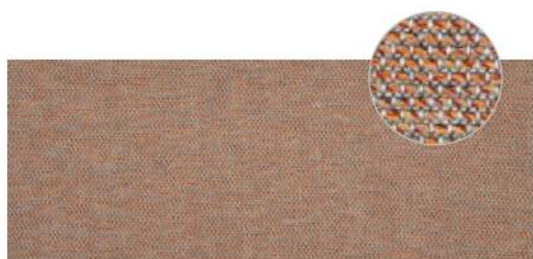
Cleaning Instructions



**LIMS** LIMESTONE



**FRES** FRESH



**COPS** COPPER



**PERS** PERGAMINO



**ICES** ICE