

A. Cruise Melange

Composizione/
Composition **58% recycled PL
42 % PL**

Altezza/ Width **140 cm**

Peso/
Weigt **(± 4%)
580 g/m2**

Resistenza alla luce/
Colour fastness to light

Martindale **40.000**

Resistenza del colore al lavaggio/
Colour fastness to washing **3/4**

Ignifugo/
Fireproof **no**

Idrorepellente/
Waterproof **no**

Antimacchia/
Stain resistant **no**



Cruise Melange 001
Pant. 12-0304



Cruise Melange 007
Pant. 13-1405



Cruise Melange 005
Pant. 13-4409



Cruise Melange 003
Pant.15-0543



Cruise Melange 004
Pant. 18-5410



Cruise Melange 009
Pant. 13-4303



Cruise Melange 010
Pant. 19-4220



Cruise Melange 011
Pant. 19-4015

A. Manhattan

Composizione/
Composition **26% PL - 37% PC**
21% CO - 16% LI

Altezza/
Width **140 cm**

Peso/
Weight **(± 5%)**
635 g/m²

Resistenza alla luce/
Colour fastness to light **Scuri/ Dark**
4

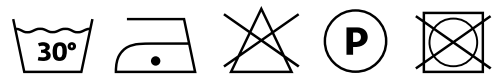
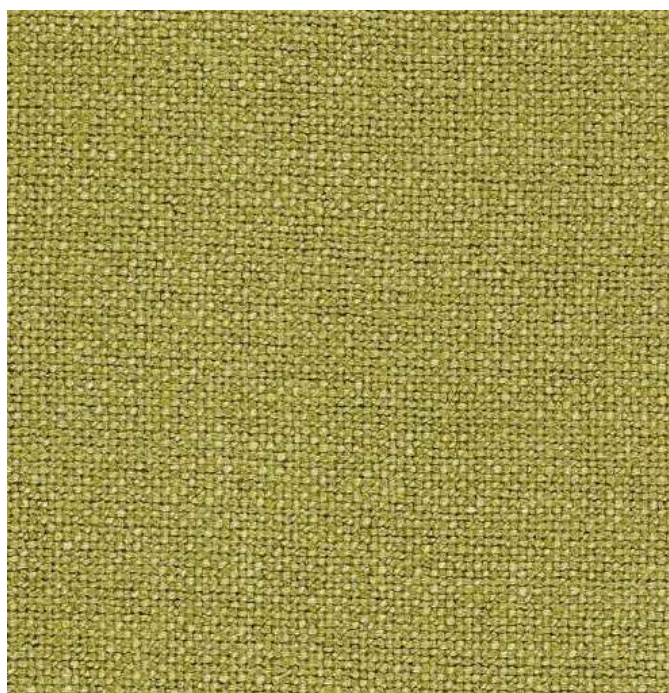
Martindale **25.000**

Resistenza del colore al lavaggio/
Colour fastness to washing **3/4**

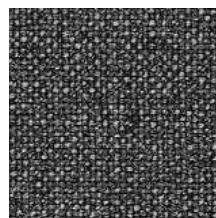
Ignifugo
Fireproof **no**

Idrorepellente
Waterproof **no**

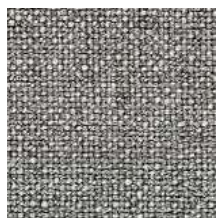
Antimacchia
Stain resistant **no**



Manhattan 804
Pant. 15 -0743



Manhattan 601
Pant. 18 -0000



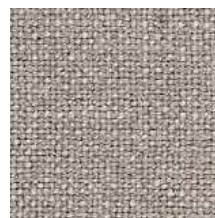
Manhattan 603
Pant. 19 -0809



Manhattan 705
Pant. 19 -3921



Manhattan 400
Pant. 12 -1403



Manhattan 402
Pant. 16 -1210



Manhattan 600
Pant. 16 -1107

A. Nord Wool

Composizione/
Composition **70% WO - 30% PL**

Altezza/
Width **150 cm**

Peso/
Weight **(± 5%)
345 g/m²**

Resistenza alla luce/
Colour fastness to light **Scuri/ Dark
5**

Martindale **100.000**

Resistenza del colore al lavaggio/
Colour fastness to washing **4/5**

Ignifugo/ Fireproof **no**

Idrorepellente
Waterproof **no**

Antimacchia
Stain resistant **no**



N.B. Solo lavaggio a secco/ Dry clean only

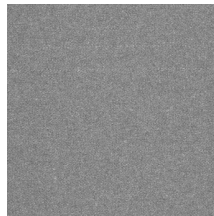
Nord Wool 404
Pant. 15 -1308



Nord Wool 502
Pant. 14-1041



Nord Wool 802
Pant. 17-0336



Nord Wool 600
Pant. 17-4402



Nord Wool 001
Pant. 18-2929



Nord Wool 003
Pant.18-2326



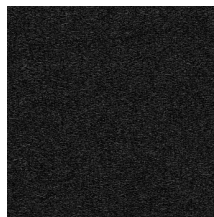
Nord Wool 302
Pant. 19-1663



Nord Wool 701
Pant. 19-4118



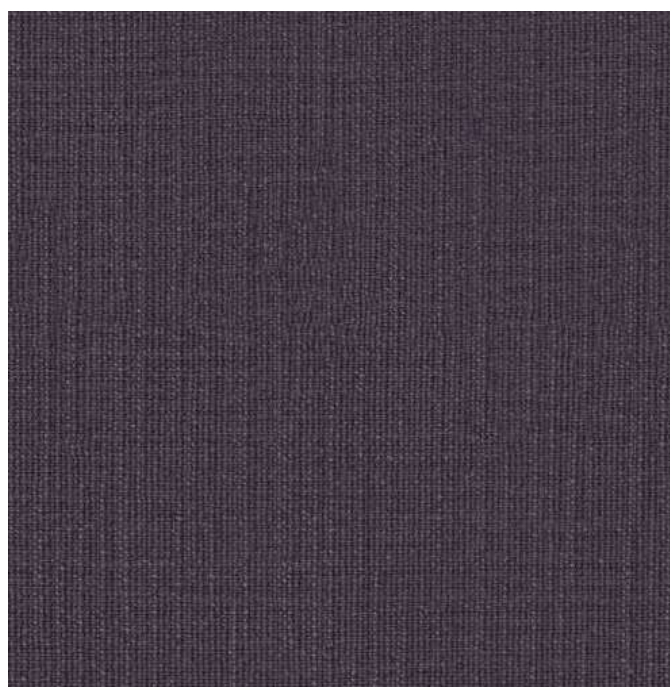
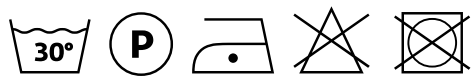
Nord Wool 402
Pant. 11 -0604



Nord Wool 200
Pant. 19-4203

A. Nuvole

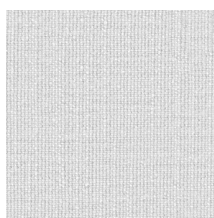
Composizione/ Composition	95 %PL - 05%CO
Altezza/ Width	140 cm
Peso/ Weight	(± 4%) 785 g/m²
Resistenza alla luce/ Colour fastness to light	4
Martindale	55.000
Resistenza del colore al lavaggio/ Colour fastness to washing	4
Ignifugo/ Fireproof	no
Idrorepellente/ Waterproof	si
Antimacchia/ Stain resistant	si



Nuvole 003
Pant. 19-3217



Nuvole 100
Pant. 13-0907



Nuvole 111
Pant. 11-0601



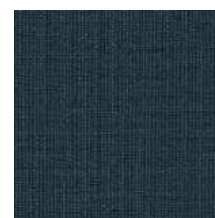
Nuvole 501
Pant.16-0954



Nuvole 601
Pant. 14-4103



Nuvole 604
Pant. 17-1212



Nuvole 704
Pant. 19-4517



Nuvole 800
Pant. 16-5304



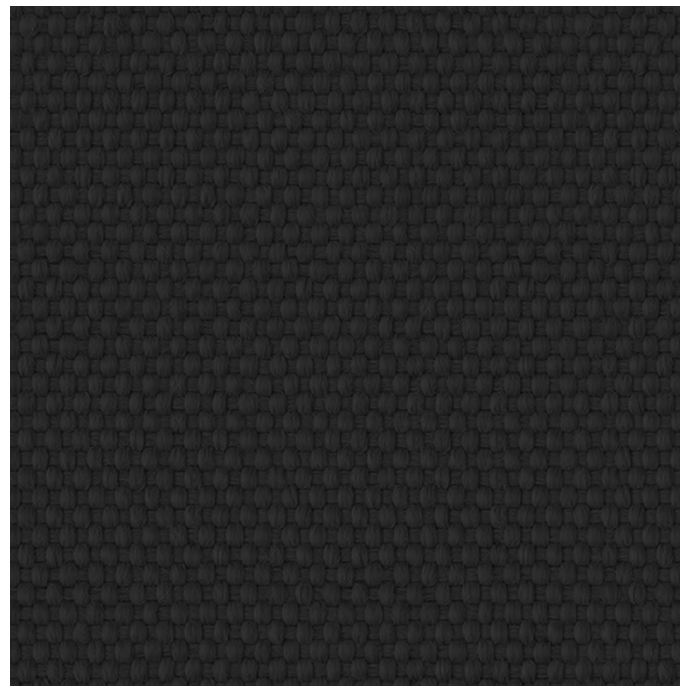
Nuvole 804
Pant. 19-0315



Nuvole 901
Pant. 17-1424

B. Alba

Composizione/ Composition	100%PP
Altezza/ Width	140 cm
Peso/ Weigt	(± 5%) 465 g/m²
Resistenza alla luce/ Colour fastness to light	>4-5
Martindale	≥40.000
Resistenza del colore al lavaggio/ Colour fastness to washing	5
Ignifugo/ Fireproof	no
Idrorepellente/ Waterproof	no
Antimacchia/ Stain resistant	si

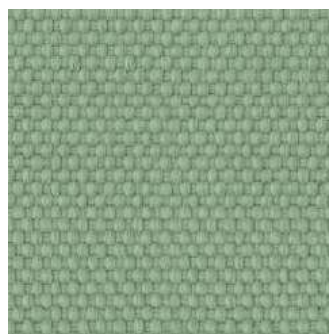


Alba 022

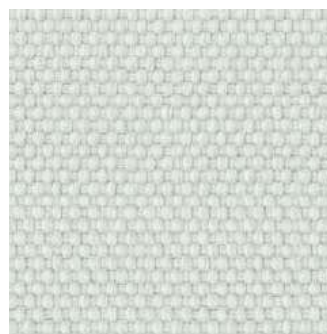
Nel caso di macchie secche o particolarmente resistenti si può agire localmente trattando la macchia con uno smacchiatore attivo, sfregare leggermente e lasciar agire qualche minuto, dopodichè effettuare il normale lavaggio in lavatrice a 30°/ Far dry or stubborn stains, use a stain remover and rub gently. Set asi de far a fewminutes and then wash as usual in the washing mach i ne at 30°



Alba 025



Alba 026



Alba 100



Alba 007

B. Bilia



Composizione/ Composition	100 % PL
Altezza/ Width	140 cm
Peso/ Weigt	(± 5%) 300 g/m²
Resistenza alla luce/ Colour fasteness to light	4
Martindale	50.000
Resistenza del colore al lavaggio/ Colour fasteness to washing	3
Ritiro/ Shrinkge	2%
Ignifugo/ Fireproof	no
Idrorepellente Waterproof	no
Antimacchia Stain resistant	si

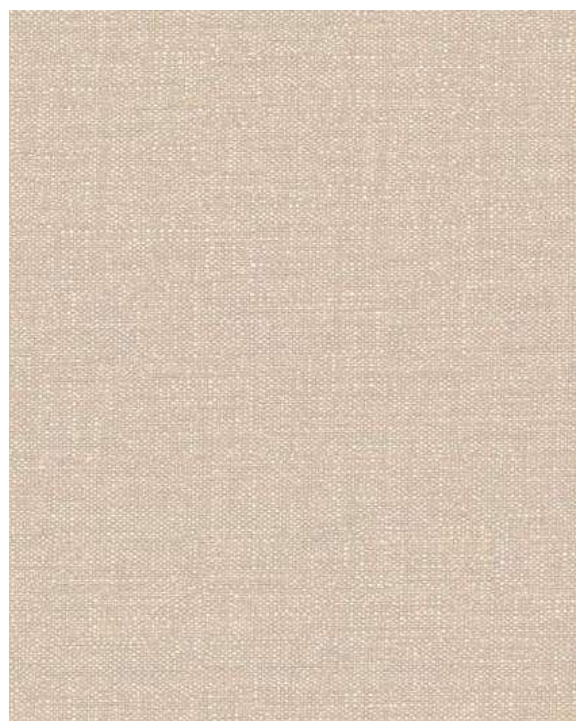
Norme di smacchiatura/ Cleaning instructions Tamponare tempestivamente i liquidi con panno asciutto o spazzolare lo sporco secco. Dab promptly the fallen liquids with a dry cloth or brush gently the dry dirt.

Macchie acquose - Bibite, caffè, vino/ Liquid stains - Drink, coffe, wine
Asportare i liquidi con carta assorbente o panno asciutto senza esercitare eccessiva pressione sul tessuto. In caso di penetrazione della macchia, strofinare con spugna umida, se necessario usare del sapone neutro da risciacquare abbondantemente con acqua tiepida e spugna pulita. Remove the stain using blotting paper or a dry cloth and avoid any pressure on fabric. In case the stain penetradet the fabric, rub gently with a damp sponge and if necessary, use a neutral soap to be well rinsed with tepid water and a clean sponge.

Macchie oleose - Grasso, salse/ Oily stains - Grease, sauce
Tamponare con carta assorbente o panno asciutto senza eccessiva pressione sul tessuto. In caso di penetrazione della macchia, strofinare con spugna umida, se necessario usare del sapone neutro da risciacquare abbondantemente con acqua tiepida e spugna pulita. Dab the stain using blotting paper or a dry cloth and avoid any pressure on fabric. In case the stain penetradet the fabric, rub gently with a damp sponge and if necessary, use a neutral soap to be well rinsed with tepid water and clean sponge.

Penna e pennarelli / Pens and drawing pens
Agire prima che si asciughi l'inchiostro, passando sulla macchia alcol diluito in acqua, lavare poi con spugna e detersivo neutro per rimuovere l'alone. Before the ink becomes dry, pass on the stain alcohol diluted in water, wash with sponge and neutral soap to remove the mark.

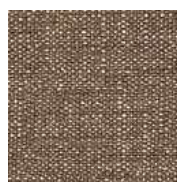
In caso di permanenza della macchia lavare in lavatrice come da norma di manutenzione. In case marks and halos remain, it is recommended to machine wash as per cleaning instructions.



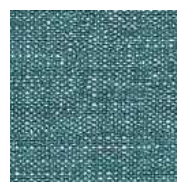
Bilia 25
Pant. 11-4301



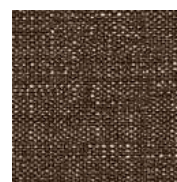
Bilia 07
Pant. 16-0906



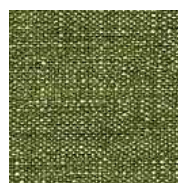
Bilia 21
Pant. 17-1321



Bilia 66
Pant. 17-4728



Bilia 84
Pant.19-1218



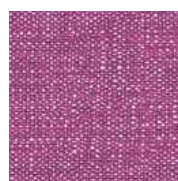
Bilia 38
Pant. 16-0435



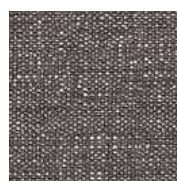
Bilia 28
Pant. 14-1036



Bilia 31
Pant. 16-0000



Bilia 105
Pant. 18-3230



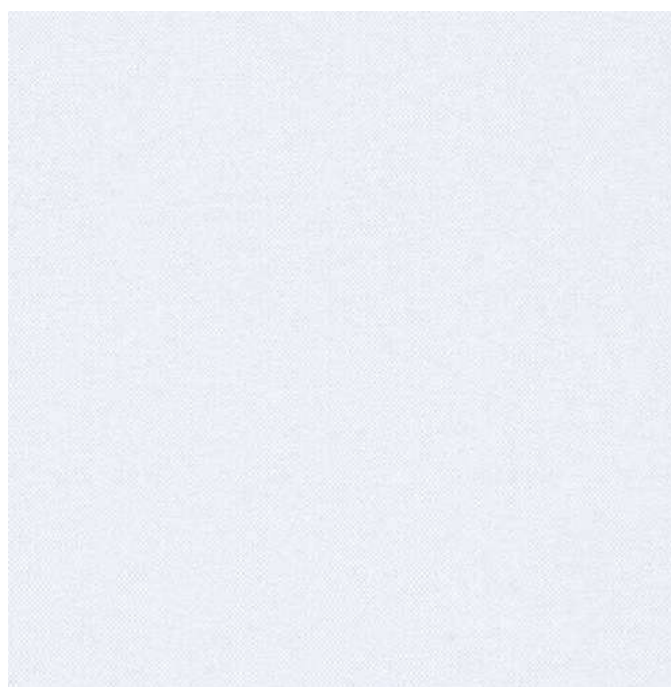
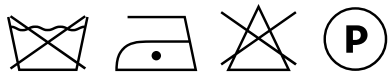
Bilia 104
Pant. 17-500



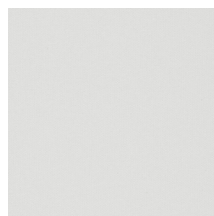
Bilia 12
Pant. 19-1663

B. Brando

Composizione/ Composition	100 % CO
Altezza/ Width	140 cm
Peso/ Weight	(± 5%) 390 g/m²
Resistenza alla luce/ Colour fastness to light	Scuri/ Dark 4/5
Martindale	25.000
Resistenza del colore al lavaggio/ Colour fastness to washing	4
Ignifugo Fireproof	no
Idrorepellente Waterproof	no
Antimacchia Stain resistant	no



Brando 01
Pant. 11-4800



Brando 02
Pant. 11-0604



Brando 03
Pant. 13-0607



Brando 04
Pant. 13-1014



Brando 05
Pant. 16-0906



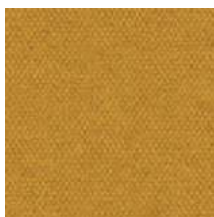
Brando 06
Pant. 19-0814



Brando 07
Pant. 17-0510



Brando 08
Pant. 15-0538



Brando 11
Pant. 15-1142



Brando 12
Pant. 17-1464



Brando 14
Pant. 19-1557

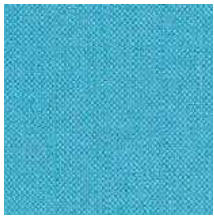


Brando 18
Pant. 19-2431

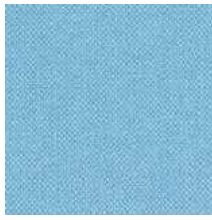


Brando 20
Pant. 18-3615

B. Brando



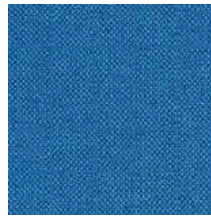
Brando 22
Pant. 16-4725



Brando 23
Pant. 15-4323



Brando 24
Pant. 17-5025



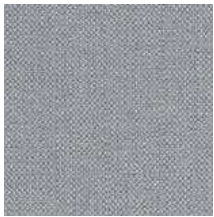
Brando 25
Pant. 18-4141



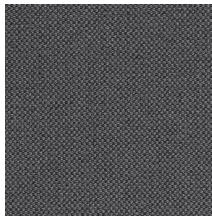
Brando 26
Pant. 19-4118



Brando 27
Pant. 19-3933



Brando 28
Pant. 17-1501



Brando 29
Pant. 18-0201



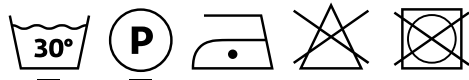
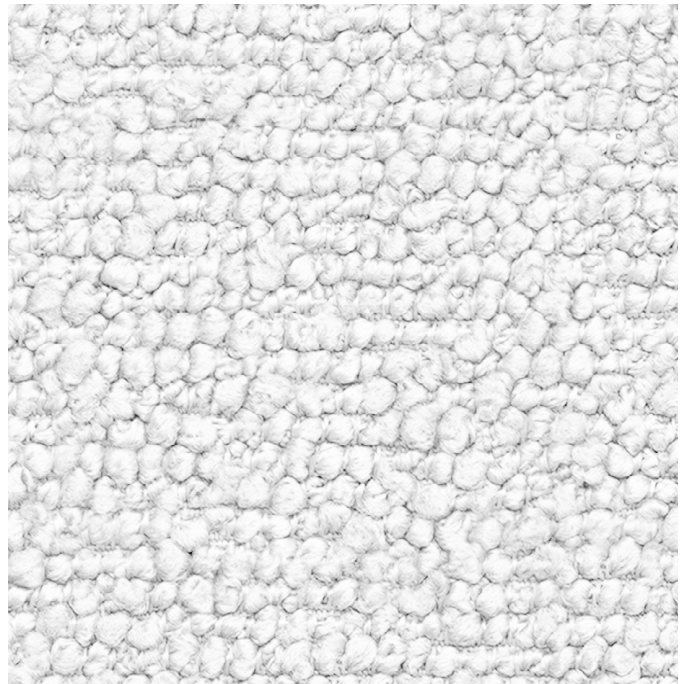
Brando 30
Pant. 19-4205



Brando 33
Pant. 19-1111

B. Crystal

Composizione/ Composition	100% PL
Altezza/ Width	140 cm
Peso/ Weight	(± 4%) 575 g/m²
Resistenza alla luce/ Colour fastness to light	4-5
Martindale	>100.000
Resistenza del colore al lavaggio/ Colour fastness to washing	A secco 4/5 Ad umido 4 Rubbing (dry) Rubbing (wet)
Ignifugo/ Fireproof	no
Idrorepellente/ Waterproof	si
Antimacchia/ Stain resistant	no



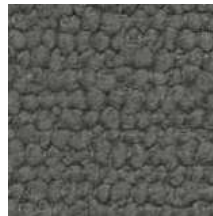
Crystal 100
Pant. 11-4800



Crystal 400
Pant. 12-5202



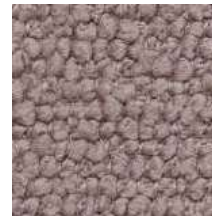
Crystal 602
Pant. 17-1210



Crystal 601
Pant. 16-4402



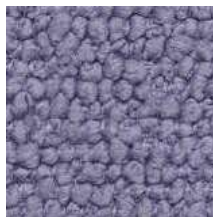
Crystal 901
Pant. 18-1336



Crystal 900
Pant. 15-1316



Crystal 001
Pant. 14-2305



Crystal 003
Pant. 16-3810



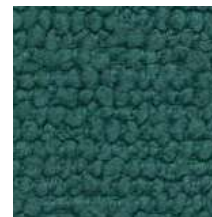
Crystal 500
Pant. 14-0647



Crystal 804
Pant. 14-0418



Crystal 800
Pant. 14-4908



Crystal 803
Pant. 18-5121



Crystal 701
Pant. 17-3923



Crystal 703
Pant. 19-4118

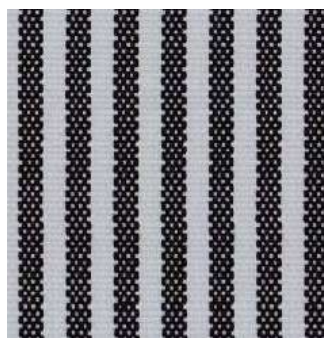
B. Erba

Composizione/ Composition	100%PP
Altezza/ Width	140 cm
Peso/ Weigt	(± 5%) 450 g/m2
Resistenza alla luce/ Colour fastness to light	>4-5
Martindale	≥40.000
Resistenza del colore al lavaggio/ Colour fastness to washing	5
Ignifugo/ Fireproof	no
Idrorepellente/ Waterproof	no
Antimacchia/ Stain resistant	si

Nel caso di macchie secche o particolarmente resistenti si può agire localmente trattando la macchia con uno smacchiatore attivo, sfregare leggermente e lasciar agire qualche minuto, dopodichè effettuare il normale lavaggio in lavatrice a 30°/ Far dry or stubborn stains, use a stain remover and rub gently. Set asi de far a fewminutes and then wash as usual in the washing mach i ne at 30°



Erba 007



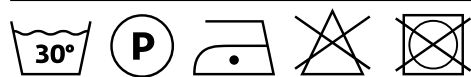
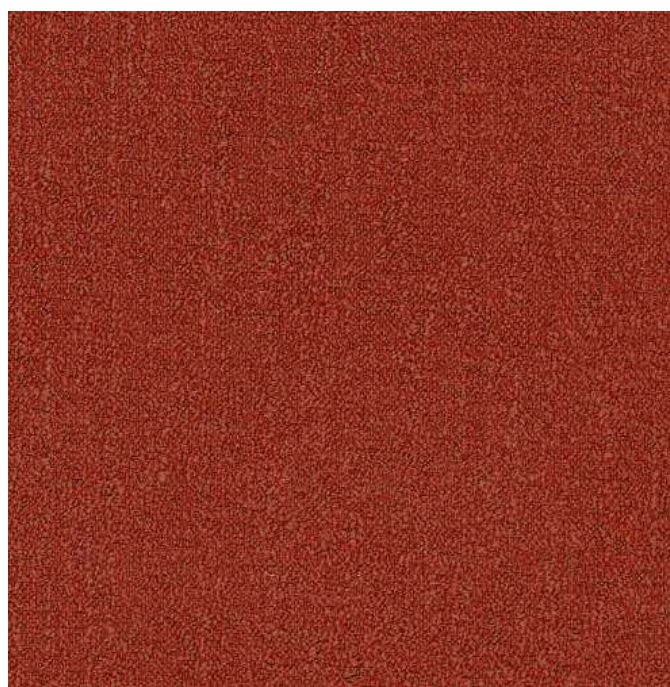
Erba 022



Erba 026

B. Fluf

Composizione/ Composition	100% PL
Altezza/ Width	140cm
Peso/ Weight	(± 5 %) 440 g/m²
Resistenza alla luce/ Colour fastness to light	4
Martindale	30.000
Resistenza del colore al lavaggio/ Colour fastness to washing	4
Ignifugo/ Fireproof	no
Idrorepellente/ Waterproof	si
Antimacchia/ Stain resistant	si
Residuo restringimento/ Residual shrinkage	2%



Fluf 0010



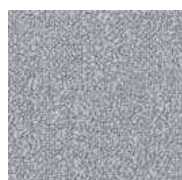
Fluf 0015



Fluf 0021



Fluf 0025



Fluf 0031



Fluf 0032



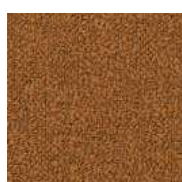
Fluf 0035



Fluf 0042



Fluf 0043



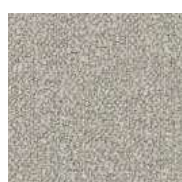
Fluf 0048



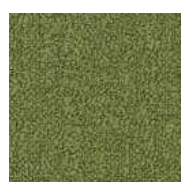
Fluf 0053



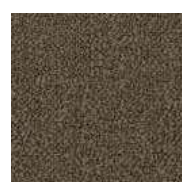
Fluf 0057



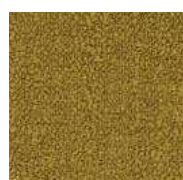
Fluf 0060



Fluf 0062



Fluf 0076



Fluf 0081



Fluf 0084



Fluf 0092



Fluf 0100



Fluf 0104

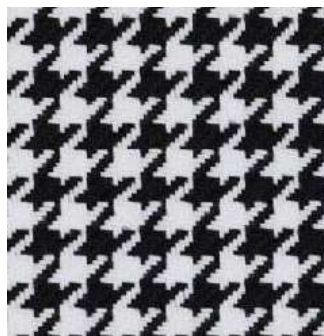
B. Fresco

Composizione/ Composition	100%PP
Altezza/ Width	140 cm
Peso/ Weight	(± 5%) 490 g/m²
Resistenza alla luce/ Colour fastness to light	>4-5
Martindale	≥40.000
Resistenza del colore al lavaggio/ Colour fastness to washing	5
Ignifugo/ Fireproof	no
Idrorepellente/ Waterproof	no
Antimacchia/ Stain resistant	si

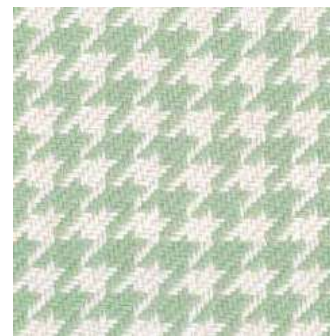
Nel caso di macchie secche o particolarmente resistenti si può agire localmente trattando la macchia con uno smacchiatore attivo, sfregare leggermente e lasciar agire qualche minuto, dopodichè effettuare il normale lavaggio in lavatrice a 30°/ Far dry or stubborn stains, use a stain remover and rub gently. Set asi de far a fewminutes and then wash as usual in the washing mach i ne at 30°



Fresco 007



Fresco 022



Fresco 026

B. Gita

Composizione/ Composition	100%PP
Altezza/ Width	140 cm
Peso/ Weight	(± 5%) 435 g/m²
Resistenza alla luce/ Colour fastness to light	>4-5
Martindale	≥40.000
Resistenza del colore al lavaggio/ Colour fastness to washing	5
Ignifugo/ Fireproof	no
Idrorepellente/ Waterproof	no
Antimacchia/ Stain resistant	si

Nel caso di macchie secche o particolarmente resistenti si può agire localmente trattando la macchia con uno smacchiatore attivo, sfregare leggermente e lasciar agire qualche minuto, dopodichè effettuare il normale lavaggio in lavatrice a 30°/ Far dry or stubborn stains, use a stain remover and rub gently. Set asi de far a fewminutes and then wash as usual in the washing mach i ne at 30°



Gita 007

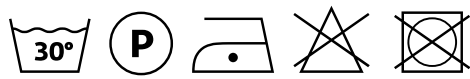
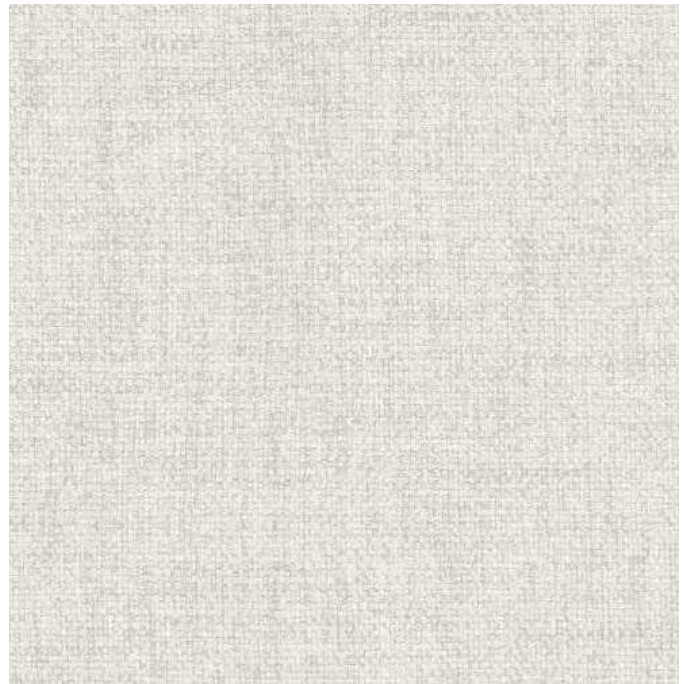


Gita 022

Gita 026

B. Joint

Composizione/ Composition	100% PL
Altezza/ Width	140 cm
Peso/ Weight	(± 4%) 375 g/m²
Resistenza alla luce/ Colour fastness to light	4
Martindale	60.000
Resistenza del colore al lavaggio/ Colour fastness to washing	4/5
Ignifugo/ Fireproof	no
Idrorepellente/ Waterproof	si
Antimacchia/ Stain resistant	si
Ritiro/ Shrinkage	0%



Joint 111



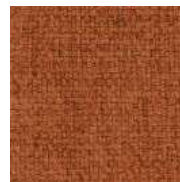
Joint 200



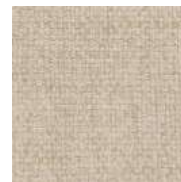
Joint 303



Joint 305



Joint 307



Joint 400



Joint 401



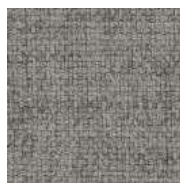
Joint 402



Joint 405



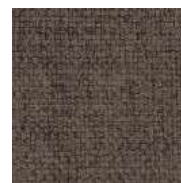
Joint 503



Joint 600



Joint 601



Joint 603



Joint 604



Joint 706



Joint 814



Joint 900

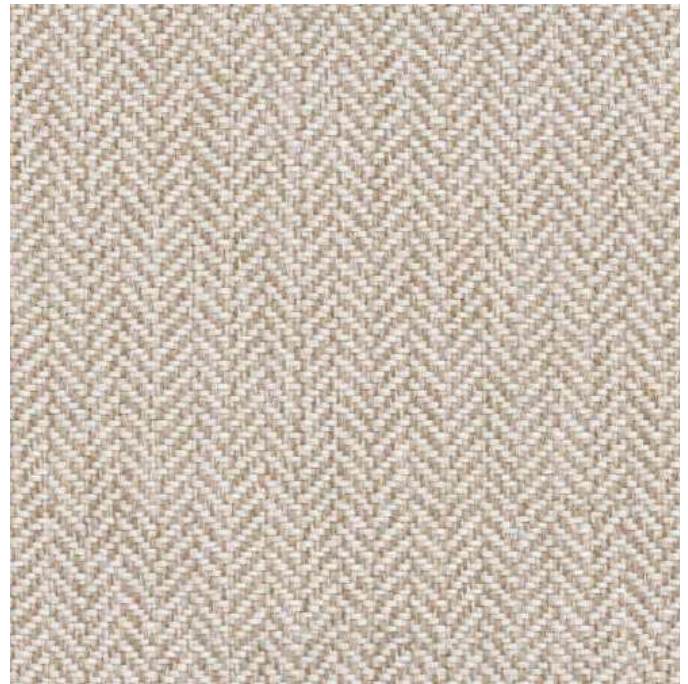


Joint 910

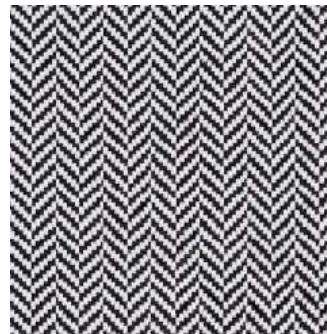
B. Mare

Composizione/ Composition	100%PP
Altezza/ Width	140 cm
Peso/ Weight	(± 5%) 435 g/m²
Resistenza alla luce/ Colour fastness to light	>4-5
Martindale	≥40.000
Resistenza del colore al lavaggio/ Colour fastness to washing	5
Ignifugo/ Fireproof	no
Idrorepellente/ Waterproof	no
Antimacchia/ Stain resistant	si

Nel caso di macchie secche o particolarmente resistenti si può agire localmente trattando la macchia con uno smacchiatore attivo, sfregare leggermente e lasciar agire qualche minuto, dopodichè effettuare il normale lavaggio in lavatrice a 30°/ Far dry or stubborn stains, use a stain remover and rub gently. Set asi de far a fewminutes and then wash as usual in the washing mach i ne at 30°



Mare 007



Mare 022



Mare 026

B. Mira



Composizione/ Composition	100 % PP
Altezza/ Width	140 cm
Peso/ Weigt	(± 5%) 271 g/m2
Resistenza alla luce/ Colour fastness to light	4
Martindale	>30.000
Resistenza del colore al lavaggio/ Colour fastness to washing	4/5
Ritiro/ Shrinkge	2%
Ignifugo/ Fireproof	no
Idrorepellente Waterproof	no
Antimacchia Stain resistant	si

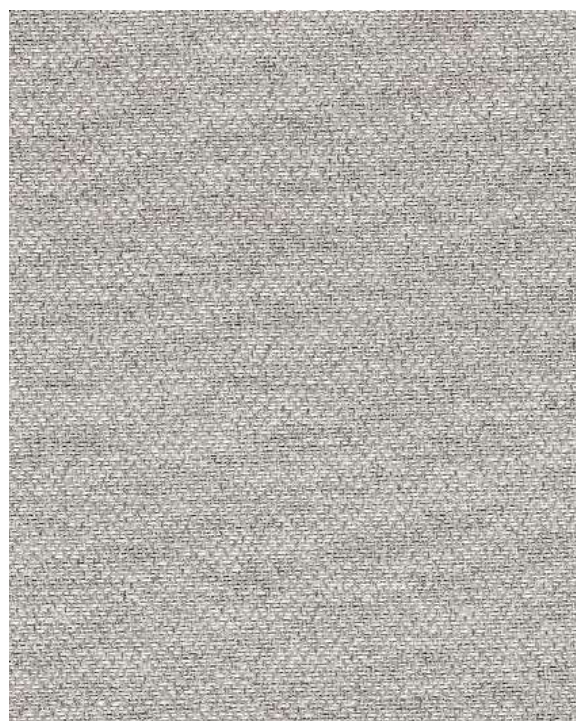
Norme di smacchiatura/ Cleaning instructions Tamponare tempestivamente i liquidi con panno asciutto o spazzolare lo sporco secco. Dab promptly the fallen liquids with a dry cloth or brush gently the dry dirt.

Macchie acquose - Bibite, caffè, vino/ Liquid stains - Drink, coffe, wine
Asportare i liquidi con carta assorbente o panno asciutto senza esercitare eccessiva pressione sul tessuto. In caso di penetrazione della macchia, strofinare con spugna umida, se necessario usare del sapone neutro da risciacquare abbondantemente con acqua tiepida e spugna pulita. Remove the stain using blotting paper or a dry cloth and avoid any pressure on fabric. In case the stain penetradet the fabric, rub gently with a damp sponge and if necessary, use a neutral soap to be well rinsed with tepid water and a clean sponge.

Macchie oleose - Grasso, salse/ Oily stains - Grease, sauce
Tamponare con carta assorbente o panno asciutto senza eccessiva pressione sul tessuto. In caso di penetrazione della macchia, strofinare con spugna umida, se necessario usare del sapone neutro da risciacquare abbondantemente con acqua tiepida e spugna pulita. Dab the stain using blotting paper or a dry cloth and avoid any pressure on fabric. In case the stain penetradet the fabric, rub gently with a damp sponge and if necessary, use a neutral soap to be well rinsed with tepid water and clean sponge.

Penna e pennarelli / Pens and drawing pens
Agire prima che si asciughi l'inchiostro, passando sulla macchia alcol diluito in acqua, lavare poi con spugna e detersivo neutro per rimuovere l'alone. Before the ink becomes dry, pass on the stain alcohol diluted in water, wash with sponge and neutral soap to remove the mark.

In caso di permanenza della macchia lavare in lavatrice come da norma di manutenzione. In case marks and halos remain, it is recommended to machine wash as per cleaning instructions.



Mira 25



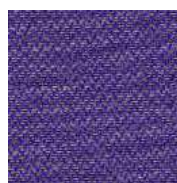
Mira 21



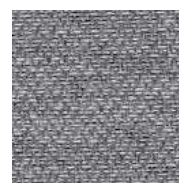
Mira 84



Mira 38



Mira 45



Mira 31



Mira 105

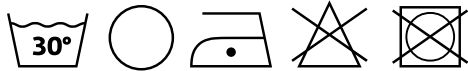


Mira 12

C. Aida

Composizione/ Composition	100% PL
Altezza/ Width	140 cm
Peso/ Weight	(± 5 in greggio) 810 g/m²
Resistenza alla luce/ Colour fastness to light	4/5
Martindale	100.000
Resistenza del colore al lavaggio/ Colour fastness to washing	4/5
Ignifugo/ Fireproof	no
Idrorepellente/ Waterproof	si
Antimacchia/ Stain resistant	si

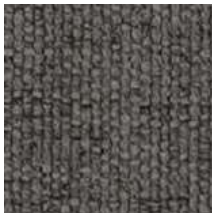
Utilizzare un panno morbido inumidito con la soluzione di acqua e sapone e pulire delicatamente la macchia fino a completa rimozione, risciacquare con acqua pura e asciugare con un panno pulito. /Use a soft cloth moistened with the water solution and soap and gently clean the stain until completely removed, rinse with pure water and dry with a clean cloth.



Aida 01
Pant.11-0604



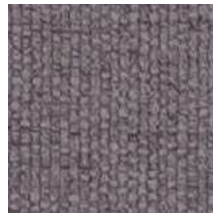
Aida 04
Pant. 15-0000



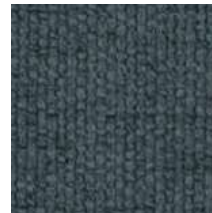
Aida 05
Pant. 17-0205



Aida 11
Pant. 14-0837



Aida 18
Pant. 12-2903



Aida 19
Pant. 18-4320



Aida 20
Pant. 16-5106



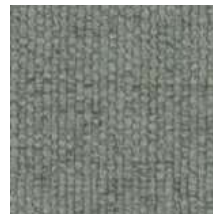
Aida 21
Pant. 19-4025



Aida 24
Pant. 17-6212



Aida 25
Pant. 15-0318



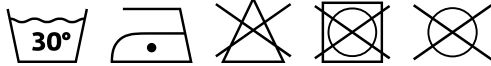
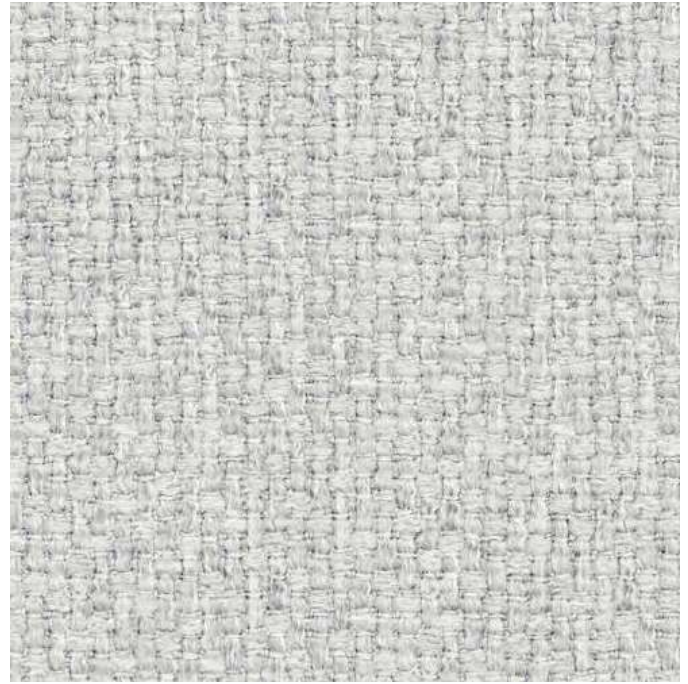
Aida 26
Pant. 13-4303



Aida 28
Pant. 18-4005

C. Bentley

Composizione/ Composition	100% PL
Altezza/ Width	140 cm
Peso/ Weight	(± 4) 410 g/m²
Resistenza alla luce/ Colour fastness to light	4
Martindale	50.000
Resistenza del colore al lavaggio/ Colour fastness to washing	A secco 4/5 Ad umido 4 Rubbing (dry) Rubbing (wet)
Ignifugo/ Fireproof	no
Idrorepellente/ Waterproof	si
Antimacchia/ Stain resistant	no



Bentley 111
Pant. 12-4302



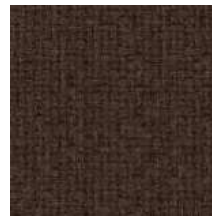
Bentley 408
Pant. 13-0905



Bentley 400
Pant. 13-5304



Bentley 409
Pant. 15-1309



Bentley 411
Pant. 19-0912



Bentley 607
Pant. 14-4203



Bentley 609
Pant. 17-0205



Bentley 610
Pant. 19-4005



Bentley 900
Pant. 14-1312



Bentley 003
Pant. 18-2109



Bentley 006
Pant. 19-3720



Bentley 500
Pant. 16-0947



Bentley 801
Pant. 19-5226



Bentley 802
Pant. 17-0510



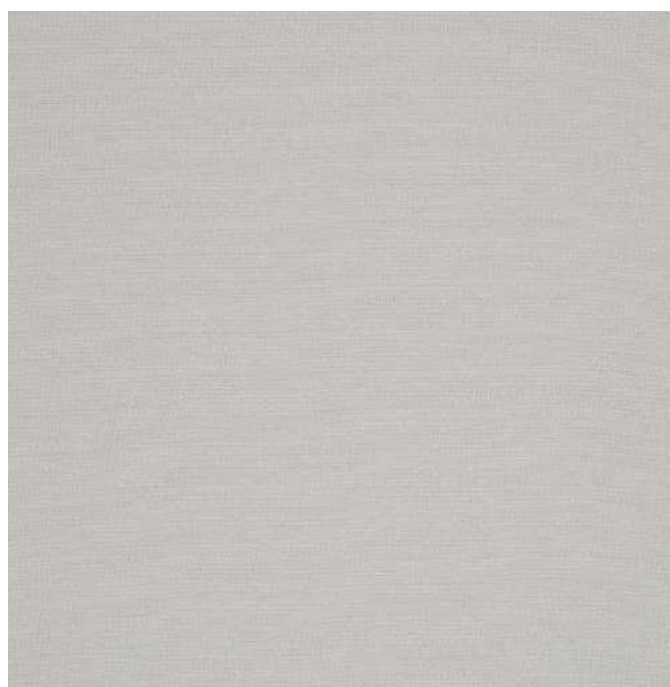
Bentley 701
Pant. 18-3918



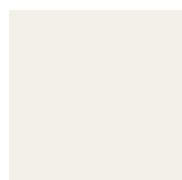
Bentley 705
Pant. 19-3810

C. Panama

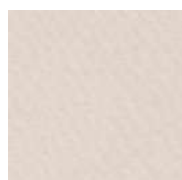
Composizione/ Composition	100% CO
Altezza/ Width	305 cm (± 2cm in greggio)
Peso/ Weigt	(± 5 in greggio) 210 g/m2
Resistenza alla luce/ Colour fasteness to light	3/4
Martindale	-
Resistenza del colore al lavaggio/ Colour fasteness to washing	5
Ignifugo/ Fireproof	no
Idrorepellente/ Waterproof	no
Antimacchia/ Stain resistant	no
Residuo restringimento/ Residual shrinkge	4%



Panama 117
Pant.14-4201



Panama 320
Pant. 11-0501



Panama 450
Pant. 12-1403



Panama 119
Pant.15-1305



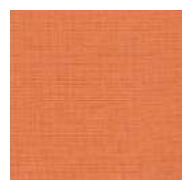
Panama 116
Pant.18-1112



Panama 780
Pant.19-0814



Panama 409
Pant.14-1036



Panama 38
Pant.16-1255



Panama 355
Pant.18-1660



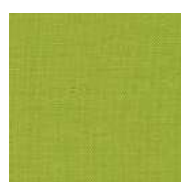
Panama 361
Pant.19-1650



Panama 786
Pant.18-3615



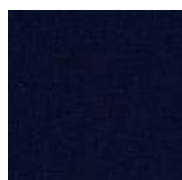
Panama 570
Pant.18-3715



Panama 360
Pant.16-0230



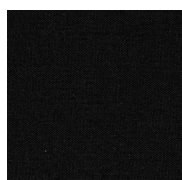
Panama 256
Pant.18-4020



Panama 380
Pant.19-3938



Panama 512
Pant.18-0201



Panama 324
Pant.19-4006

C. Penelope

Composizione/ Composition	100% PL
Altezza/ Width	140 cm
Peso/ Weight	(± 5%) 350 g/m²
Resistenza alla luce/ Colour fastness to light	Scuri/ Dark 3
Martindale	>100.000
Resistenza del colore al lavaggio/ Colour fastness to washing	Scarico 5 Temperatura dell'acqua 40°
Ignifugo/ Fireproof	no
Idrorepellente/ Waterproof	si
Antimacchia/ Stain resistant	no

Lavaggio Pulire con un panno umido
Care instructions Wipe it with a damp cloth



Penelope 01



Penelope 03



Penelope 05



Penelope 08



Penelope 09



Penelope 12



Penelope 15



Penelope 20



Penelope 23



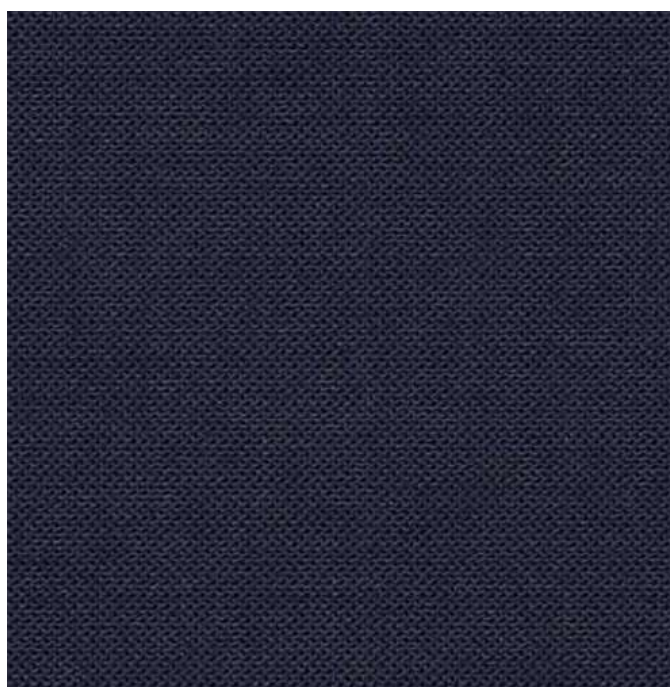
Penelope 25



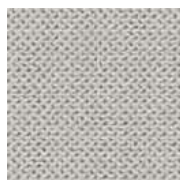
Penelope 27

C. Smile

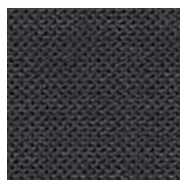
Composizione/ Composition	100% PL
Altezza/ Width	145 cm
Peso/ Weight	(± 5%) 190 g/m²
Resistenza alla luce/ Colour fastness to light	Scuri/ Dark 5
Martindale	>45.000
Resistenza del colore al lavaggio/ Colour fastness to washing	-
Ignifugo/ Fireproof	no
Idrorepellente/ Waterproof	no
Antimacchia/ Stain resistant	no



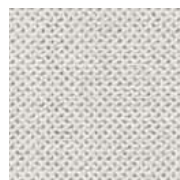
Smile 3920
Pant.19-3933



Smile 5282
Pant.14-1106



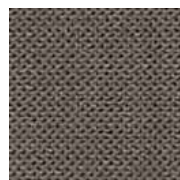
Smile 9000
Pant.18-0201



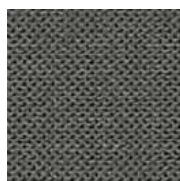
Smile 9104
Pant.11-4800



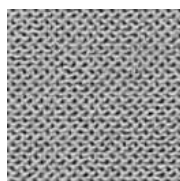
Smile 9303
Pant.19-0303



Smile 9306
Pant.17-1506



Smile 9403
Pant.18-0000



Smile 9802
Pant.16-4402

C. Velluto

Composizione/ Composition	100% PL
Altezza/ Width	145 cm
Peso/ Weigt	(± 5 in greggio) 360 g/m2
Resistenza alla luce/ Colour fastness to light	-
Martindale	>45.000
Resistenza del colore al lavaggio/ Colour fastness to washing	5
Ignifugo/ Fireproof	no
Idrorepellente/ Waterproof	no
Antimacchia/ Stain resistant	no



Velluto 1
 Pant. 16-1107



Velluto 2
 Pant. 15-1309



Velluto 7
 Pant. 19-1934



Velluto 8
 Pant. 18-0940



Velluto 9
 Pant. 18-0430



Velluto 10



Velluto 11



Velluto 12



Velluto 13
 Pant. 17-5513



Velluto 14
 Pant 16-1506



Velluto 15
 Pant. 16-4402



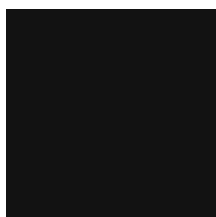
Velluto 16
 Pant. 18-0000



Velluto 17
 Pant. 18-0403



Velluto 19
 Pant. 19-4305



Velluto 20
 Pant. 19-4007

AP. Levante Leather



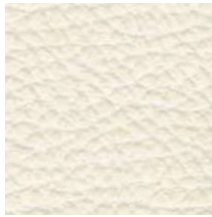
Levante 200
Pant. 11-4800



Levante 211
Pant. 17-1226



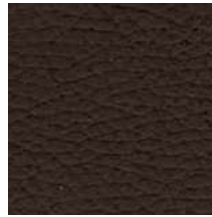
Levante 218
Pant. 16-0000



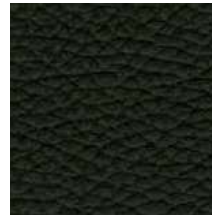
Levante 210
Pant. 12-5202



Levante 215
Pant. 18-1110



Levante 212
Pant. 19-1015



Levante 202
Pant. 19-4006



Levante 220
Pant. 18-0403



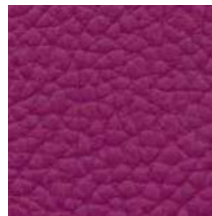
Levante 222
Pant. 19-4241



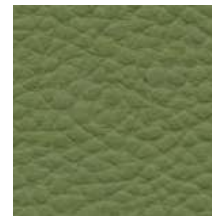
Levante 232
Pant. 14-1307



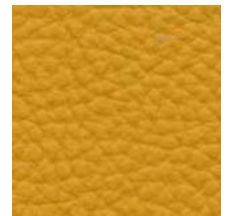
Levante 238
Pant. 17-4408



Levante 216
Pant. 19-2431



Levante 225
Pant. 17-0330



Levante 224
Pant. 15-1050

AP. Levante Leather



		Caratteristiche tecniche/ Technical datasheet			
Tipo di pellame/ Hyde type	Bovino Europeo/ European bovine	Test	Norma/ Method	Valori/ Result	Scala/ Grade
Concia/ Tanning	Al cromo/ Chrome	Sfregamento a secco/ Dry friction	ISO 11640	≥1.000	Cicly/ Cycles
Tintura / Dyeing	Passante/ Penetrating	Sfregamento a umido/ Damp friction	ISO 11640	≥200	Cicly/ Cycles
Rifinitone/ Finishing	Pigmentata/ Pigment	Ancoraggio rifinitone/ Finish locking	ISO 11644	≥2,0 N/ 10 mm	
Superficie/ Surface	Fiore corretto/ Corrected grain	Fatica a flessione/ Crocking fatigue	ISO 5402	≥20.000	Cicly/ Cycles
Spessore/ Thickness	1,4 - 1,6 mm	Solidità alla luce/ Solidity in light	ISO 105-B02	≥5	Grigi/ Grey

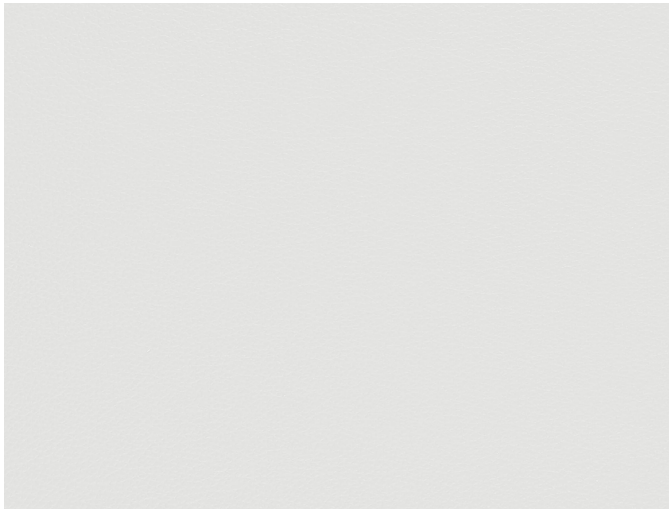
Per quanto riguarda la manutenzione vi informiamo che la nostra pelle è facilmente pulibile con acqua e sapone neutro. Vi rammentiamo che la pelle nei colori chiari è più sensibile allo sporco e richiede una regolare ed attenta pulizia, per evitare che lo sporco venga assorbito e non possa più essere rimosso.

As regards care instructions we inform you our Leather is easily washable with water and neutral soap. We remind you leather in clear colors is more sensitive to dirt and demands a regular and attentive cleaning to avoid dirt to be absorbed and no longer removed.

L'ottima qualità della pelle Levante deriva da un' accurata selezione di bovini di origine europea. **Levante Leather** è un fiore corretto. Il procedimento di tintura è passante, nella stessa tinta della rifinitone. La superficie di ciascuna pelle è di circa 4,0 m², lo spessore di 1,4 - 1,6 mm. Tutti i colori sono disponibili con trattamento ignifugo e certificazione UNI9175 e BS 5852 Crib 5 con un minimo di 50 mq.

The excellent quality of Levante leather derives from an accurate selection of European bovine. **Levante Leather** is a corrected grain. Dyeing procedure is penetrating in the same color of the Finishing. Surface of each leather is about 4,0 m², thickness 1,4 - 1,6 mm. Color Folder includes an extraordinary variety of options obtained from a single quality leather. All colors are available with fireproof treatment and UNI9175 certification and BS 5852 Crib 5 with minimum 5,0 sq.m.

P. Nappa Leather



Neve 117
Pant. 11-4800



Latte 195
Pant. 11-0701



Avena 197
Pant. 14-1113



Lino 197
Pant. 15-6307



Segale 226
Pant. 16-1212



Visone 190
Pant.18-1022



Cioccolato 140
Pant. 19-1116



Siena 174
Pant. 17-1045



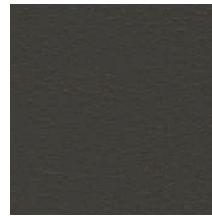
Cuio 131
Pant. 18-0933



Caffè 189
Pant. 19-1220



Marmotta 218
Pant. 18-0513



Moretto 147
Pant.19-0812



Bordeaux 110
Pant. 19-1524



Germanio 113
Pant. 18-1658



Ciclamino 188
Pant. 19-2315



Lillà 102
Pant. 19-2315



Viola 233
Pant. 19-3540



Bouganville 220
Pant.18-1741



Arancione 149
Pant. 16-1443



Girasole 148
Pant. 14-0760

P. Nappa Leather



Giallo oro 209
Pant. 16-0946



Verde 212
Pant. 17-0336



Azteco 196
Pant. 18-4834



Provenza 145
Pant. 18-4029



Bluette 105
Pant. 19-4118



Fiordaliso 227
Pant. 17-4021



Camoscio 207
Pant. 17-1310



Peltro 202
Pant. 17-501



Beola 112
Pant. 18-0306



Nero 101
Pant. 19-0303

Tipo di pellame/ Hyde type	Bovino Europeo/ European bovine
Concia/ Tanning	Al cromo/ Chrome
Tintura / Dyeing	Passante/ Penetrating
Rifinitone/ Finishing	Poliuretano/ Polyurethane
Superficie/ Surface	Fiore liscio/ Smooth grain
Spessore/ Thickness	1,0 -1,2 mm
Taglia media/ Average size	≥5,0 mq

Per quanto riguarda la manutenzione vi informiamo che la nostra pelle è facilmente pulibile con acqua e sapone neutro. Vi rammentiamo che la pelle nei colori chiari è più sensibile allo sporco e richiede una regolare ed attenta pulizia, per evitare che lo sporco venga assorbito e non possa più essere rimosso.

As regards care instructions we inform you our Leather is easily washable with water and neutral soap. We remind you leather in clear colors is more sensitive to dirt and demands a regular and attentive cleaning to avoid dirt to be absorbed and no longer removed.

Caratteristiche tecniche/ Technical datasheet

Test	Norma/ Method	Valori/ Result	Scala/ Grade
Sfregamento a secco/ Dry friction	ISO 11640	≥1.000	Cicly/ Cycles
Sfregamento a umido/ Damp friction	ISO 11640	≥250	Cicly/ Cycles
Resistenza al fuoco/ Fire resistance	ISO 1021/1-2	Nessuna combustione/ No ignition	
Ancoraggio rifinitone/ Finish locking	ISO 11644	≥3,0	N/cm2
Fatica a flessione/ Crocking fatigue	ISO 5402	≥50.000	Cicly/ Cycles
Solidità alla luce/ Solidity in light	ISO 105-Bo2	>4	Blu / Blue
Invecchiamento da calore/ Heat ageing	ISO 17228	≥4	Grigi / Grey

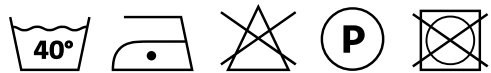
L'ottima qualità della nappa leather deriva da un'accurata selezione di bovini di origine europea. **Nappa leather** è un fiore liscio nappato. Il procedimento di tintura è passante, nella stessa tinta della rifinitone. La superficie di ciascuna pelle è di circa 5,0 m², lo spessore di 1,0-1,2 mm. La cartella colori comprende un'eccezionale serie di varianti, ottenute su un'unica qualità di pelle. La gamma cromatica, così ampia ed attuale, distingue tale pelle per l'eccellente possibilità di utilizzo, legato alle più esigenti proposte di design. Tutti i colori sono disponibili con trattamento ignifugo e certificazione UNI9175 e BS 5852 Crib 5 con un minimo di 50 mq.

The excellent quality of **Nappa leather** derives from an accurate selection of European bovine. Nappa leather is a smooth grain one. Dyeing procedure is penetrating in the same color of the Finishing. Surface of each leather is about 5,0 m², thickness 1,0-1,2 mm. Color Folder includes an extraordinary variety of options obtained from a single quality leather. A so extended and actual chromatic gamma distinguishes this Nappa Leather for an excellent possibility of application and solve all design demands. All colors are available with fireproof treatment and UNI9175 certification and BS 5852 Crib 5 with minimum 5,0 sq.m.

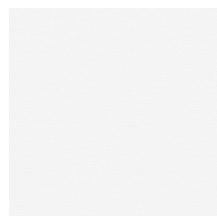
Lycra - Special Fabrics and Materials



Composizione/ Composition	80% PA - 20%EA
Altezza/ Width	150 cm
Peso/ Weight	(± 5%) 190 g/m2
Resistenza alla luce/ Colour fastness to light	Scuri/ Dark 6/7
Martindale	25.000
Resistenza del colore al lavaggio/ Colour fastness to washing	4/5
Ignifugo Fireproof	no
Idrorepellente Waterproof	no
Antimacchia Stain resistant	no



Lycra 701
Pant. 19-3938



Lycra 101
Pant. 11-0601



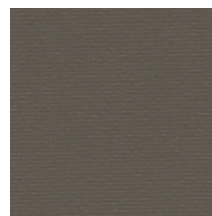
Lycra 702
Pant. 16-4535



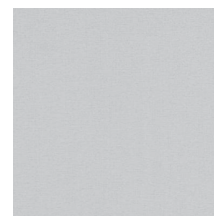
Lycra 305
Pant.19-1763



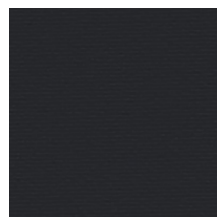
Lycra 703
Pant. 18-4247



Lycra 406
Pant. 18-1016



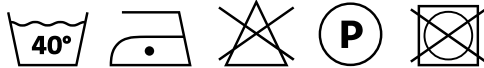
Lycra 600
Pant. 16-4402



Lycra 605
Pant. 19-3908

Lycra Velluto – Special Fabrics and Materials

Composizione/ Composition	85% PA - 15 % EA
Altezza/ Width	140 cm
Peso/ Weight	(± 5%) 220 g/m²
Resistenza alla luce/ Colour fastness to light	Scuri/ Dark - Chiari/ Light >5 2-3
Martindale	10.000
Resistenza del colore al lavaggio/ Colour fastness to washing	4/5
Ignifugo Fireproof	no
Idrorepellente Waterproof	no
Antimacchia Stain resistant	no



Lycra Velluto 9194
Pant. 18-0201



Lycra Velluto
9260
Pant. 14-4201

Lycra Velluto
50003
Pant. 19-2520

Lycra Velluto
60168
pant. 19-4052

N-Zip - Special Fabrics and Materials



Composizione/ Composition

Nastro/ Zipper tape	Poliestrere
Dente/ Tooth	Resina acetalica pressofusa Die-cast acetal resin
Cursore/ Slider	Lega a base Zinco Zinc based alloy
Quote geometriche/ Geometric dimensions	
Larghezza Catena (A) Chain width	7,40 mm
Spessore catena (B) Chain thickness	3,00 mm
Passo (C) Step of chain	24,04 (n° denti in 100 mm) 24,04 (n° teeth in 100 mm)
Prove dinamometriche/ Dynamometric tests	
Sforzo Catena Trasversale [N] (D) Transverse chain effort	400 valore di garanzia 400 warranty value
Sforzo Cursore Bloccato [N] Blocked slider effort (cursore superiore/ upper slider) (E)	50 valore di garanzia 50 warranty value



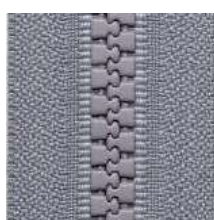
N-Zip 550



N-Zip Y 287



N-Zip 030



N-Zip 154



N-Zip 005



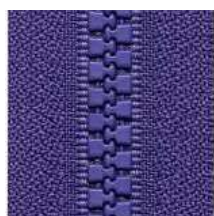
N-Zip Y 204



N-Zip 875



N-Zip 060



N-Zip 559



N-Zip Y 016



N-Zip 040

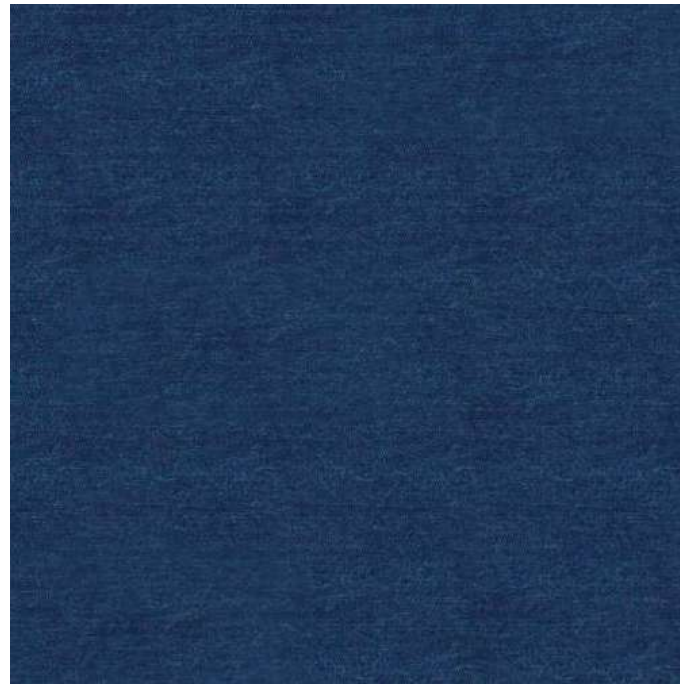


N-Zip 580

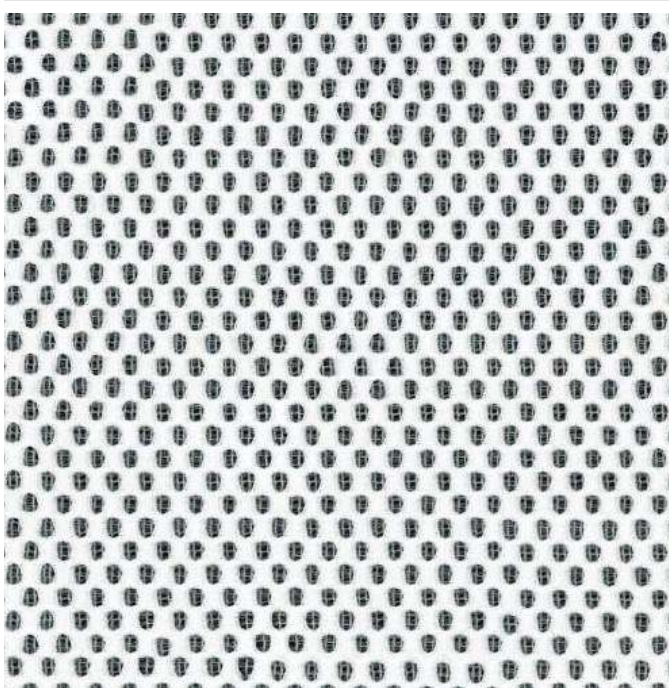
Pop up Inspiration



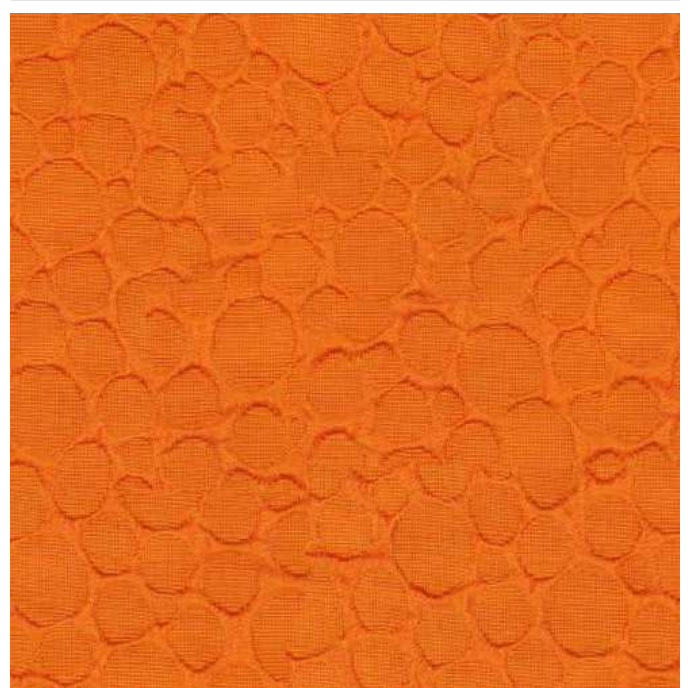
Leonte 1



Leonte 2
Jeans



Cama 1



Cama 2

